

Central Children's Long-Term Ventilation Service Nippy Junior+ Ventilator Equipment List - 15mm and 22mm Circuit






PLEASE NOTE:

This equipment list has been produced for guidance only. Information for a variety of suppliers is displayed here; therefore, some of these products appear more than once. Not all of these products will be required, please check the specific equipment required and the preferred supplier for the child under your care. This document is reviewed on a yearly basis and updated as necessary. The order codes are displayed for your guidance but may be subject to change. Please ensure you check you have the correct order information with the suppliers prior to placing your order. The Children's Long-Term Ventilation Team will not be responsible for incorrect or inappropriate ordering of equipment

Reviewed June 2021
Next Review Due: June 2023
Author: Central LTV Team

Central Children's Long-Term Ventilation Service: Nippy Junior+ Ventilator for 15mm and 22mm Single Limb Circuit


Product	Order code	Supplier	
Inlet Filters (pack of 5)	0584 http://www.nippyventilator.com/products/rear-air-inlet-filter/	Breas Medical	
Circuits and components			
Hydro-Therm HME <i>For Tidal Volumes >60ML</i>	1850000 (Box of 20)	Intersurgical	
Humivent Mini Heat Moisture Exchanger <i>For Tidal Volume 15-600 ML</i>	11112	Gibeck (Teleflex Medical Europe Ltd)	

Reviewed June 2021

Next Review Due: June 2023

Author: Central LTV Team

Central Children’s Long-Term Ventilation Service: Nippy Junior+ Ventilator for 15mm and 22mm Single Limb Circuit

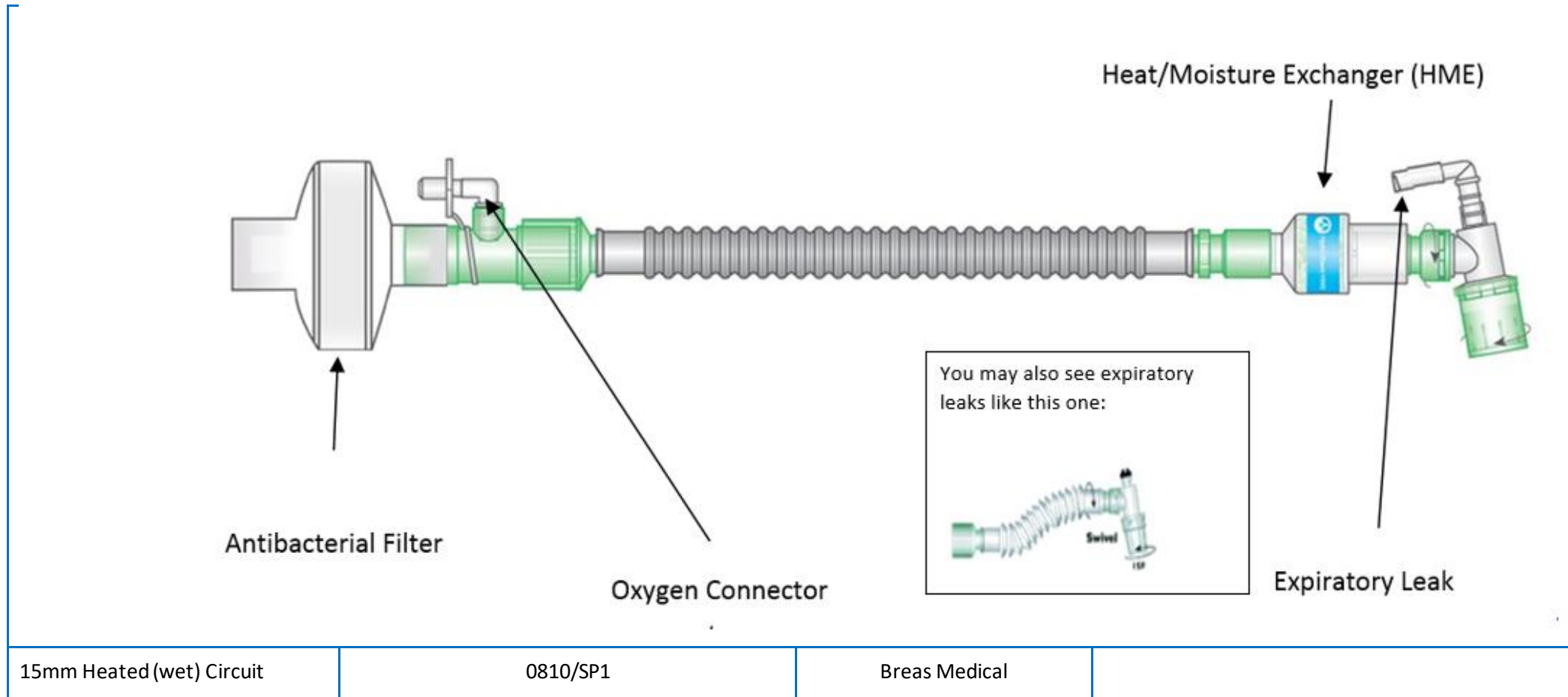
<p>Portex Thermovent 600 <i>For Tidal Volumes 50-600ML</i></p>	<p>100/580/015 (Pack of 20)</p>	<p>Smiths Medical</p>	
<p>15mm Dry Circuit <i>Please see below</i></p>	<p>0806/SP6</p>	<p>Breas Medical</p>	

Reviewed June 2021

Next Review Due: June 2023

Author: Central LTV Team

Central Children's Long-Term Ventilation Service: Nippy Junior+ Ventilator for 15mm and 22mm Single Limb Circuit



Reviewed June 2021

Next Review Due: June 2023

Author: Central LTV Team

Central Children's Long-Term Ventilation Service: Nippy Junior+ Ventilator for 15mm and 22mm Single Limb Circuit

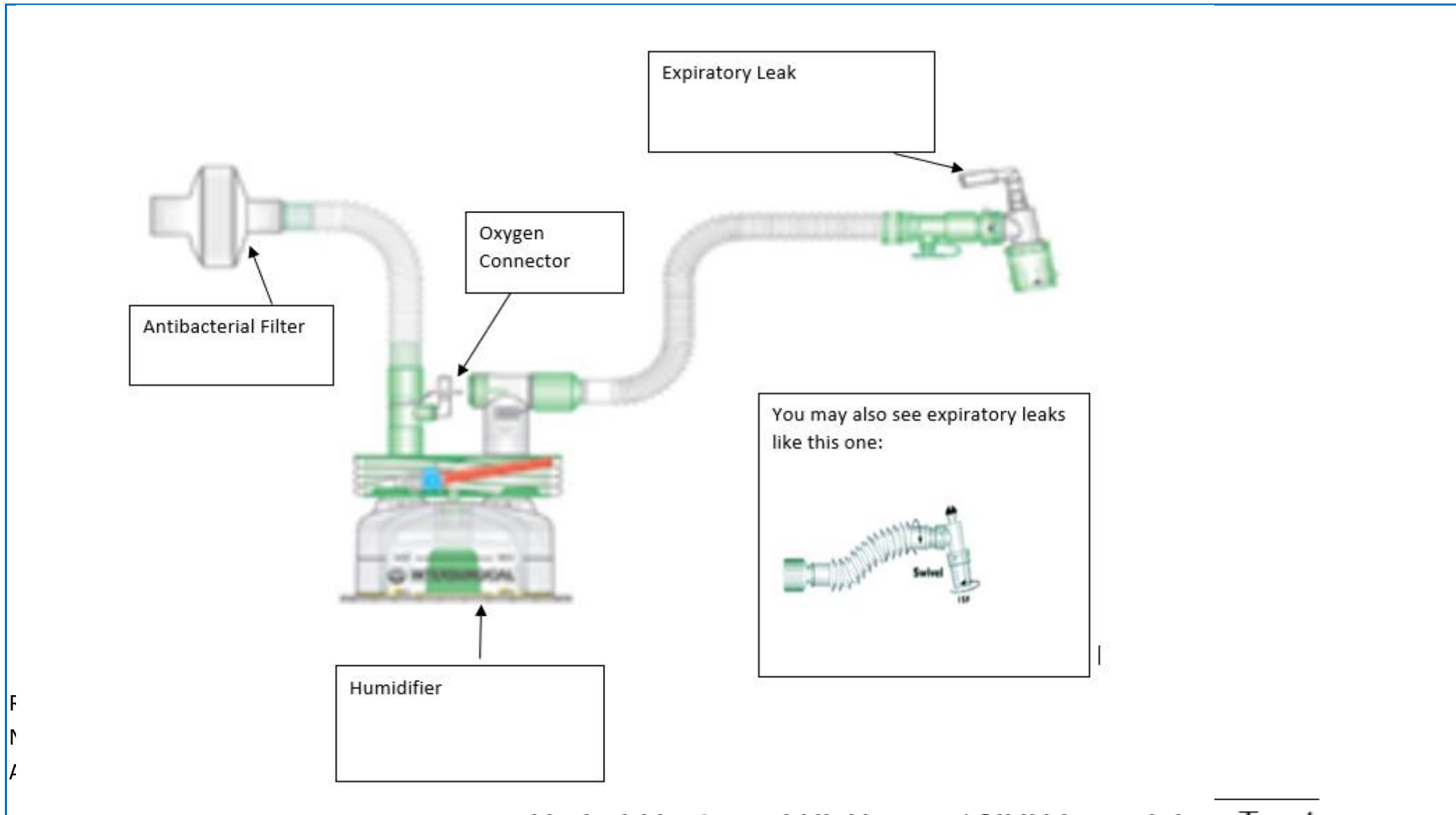
<i>Please see below</i>			
-------------------------	--	--	--

Reviewed June 2021

Next Review Due: June 2023

Author: Central LTV Team

Central Children's Long-Term Ventilation Service: Nippy Junior+ Ventilator for 15mm and 22mm Single Limb Circuit



F
N
A

Central Children's Long-Term Ventilation Service: Nippy Junior+ Ventilator for 15mm and 22mm Single Limb Circuit

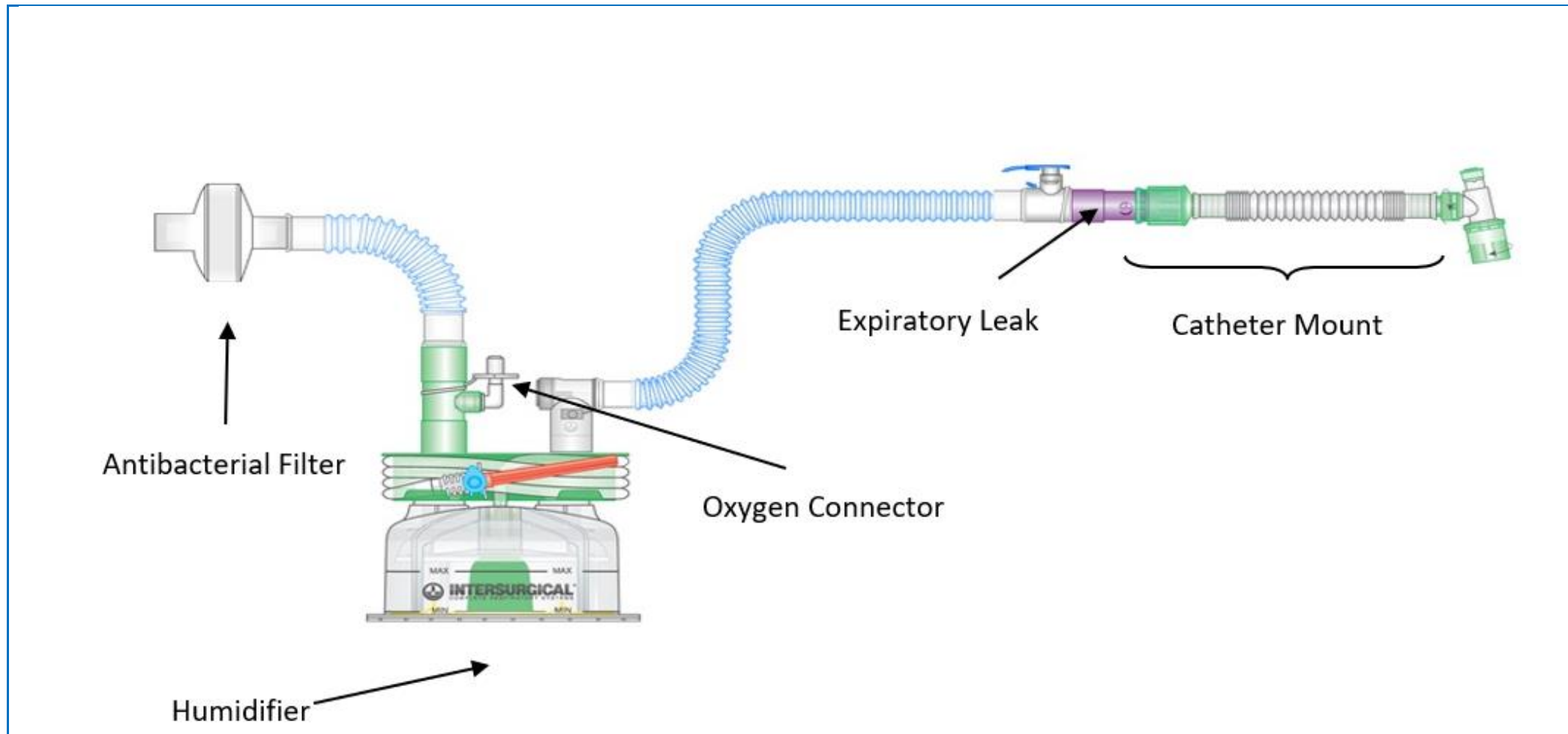
22mm Heated Circuit (blue) <i>Please see below- catheter mount optional</i>	0805/SP1	Breas Medical	

Reviewed June 2021

Next Review Due: June 2023

Author: Central LTV Team

Central Children's Long-Term Ventilation Service: Nippy Junior+ Ventilator for 15mm and 22mm Single Limb Circuit

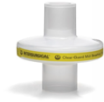



Reviewed June 2021

Next Review Due: June 2023

Author: Central LTV Team

Central Children’s Long-Term Ventilation Service: Nippy Junior+ Ventilator for 15mm and 22mm Single Limb Circuit

Filter Guard (Yellow Expiratory)	1644 https://www.intersurgical.com/products/airway-management/floguard-low-resistance-breathing-filter-for-cpap-and-bilevel	Intersurgical	
Swivel Elbow (Connects tracheostomy tube to circuit)	1898	Intersurgical	

Company Contact Details:

Breas Medical

Tel: 01789293460
breas@breas.com

Fischer Paykel Appliance Ltd

Tel: 01628626136
<https://www.fisherpaykel.com/uk/help-and-support/contact-us>

Smith’s Medical Ltd

Tel: 0845 850 0445
Fax: 01233 722153
ukcs@smiths-medical.com

Intersurgical Ltd

Tel: 01189656300
<https://www.intersurgical.com/contact>

Teleflex Medical Europe Ltd

Tel: 01494 53 27 61
info@uk.telflex.com

Reviewed June 2021

Next Review Due: June 2023

Author: Central LTV Team